

PRECISION POWER

A PRECISION GROUP COMPANY



USER'S MANUAL FOR PRECISION POWER 36W MICRO UPS

MODEL NUMBER: PP36L-12U

WARNING

Review the following important safety warnings to avoid bodily injury or damage to equipment during installation or operation of the device. Read ALL instructions before attempting to install or operate this device.

⚠ This device is intended for indoor use only. To prevent the risk of fire or electrical shock, install in dry location free from damp or wet environment, or potentially damp or wet environment.

⚠ Adhere to all acceptable operating environment limitations as listed to prevent the risk of fire or electrical shock (see user specifications within User's Manual)

⚠ Risk of fire or explosion if improper battery is installed and attempted to operate within this device. Device is rated and approved for use with standard sealed lead acid battery rated at 12Vdc 7Ah-8Ah. Follow User Manual instructions for proper installation of battery. Dispose of used batteries in accordance to battery manufacturer specifications.

⚠ NO user-replaceable parts within this device except the battery. Do not remove cover unless you are installing, replacing, or servicing the battery.

NOTE: The reference to "MICRO UPS" within this User Manual refers to Precision Power Model PP36L-12U and all package accessories as listed below

CONTENTS OF DESKTOP PRO PACKAGE

NOTE: Please verify all standard contents are accounted for upon receipt of Desktop Pro UPS.

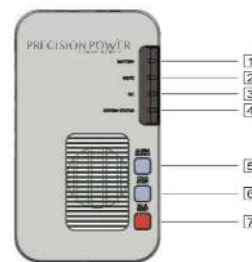
STANDARD: (1) Power Supply/Charger; (1) Li Ion Battery Pack; (1) AC Power Cord; (1) 7-Pin Connector; (1) User's Manual.

Optional: (1) Universal Wall Mount Enclosure w/ Cover.

MICRO UPS INTRODUCTION

MICRO UPS is designed and intended for use as a Desktop or Wall-Mount uninterruptible 12Vdc power supply and battery backup device for 12Vdc CPE Equipment (i.e. ONT, Router, Access Point). The MICRO UPS not only provides constant supply of DC power during normal operating conditions, but offers battery backup power in case of electrical power outage.

VISUAL INDICATORS AND CONTROL SWITCHES



VISUAL INDICATORS

4	SYSTEM STATUS	Color-Green	Receiving AC power load to operate under normal conditions
3	DC	Color-Green	Working off Battery
2	Mute	Color-Yellow	"Flashing"- Audible Alarm Silenced for 24 hrs, "Solid"- Audible Alarm silenced until manually enabled again.
1	Battery	Color-Red	Service or replace battery, or battery missing

CONTROL SWITCHES

5	ALARM SILENCE	Disables Audible Alarm Function. Press and release to disable Audible Alarm for 24 hours. Press and hold for 15 seconds to disable Audible Alarm indefinitely. Press and hold for another 15 seconds in order to re-enable Audible Alarm function.	
6	COLD START	Allows Desktop Pro capability to restart and restore standby power with new battery or to use reserve standby power on existing battery when in AC line power outage for extended time.	
7	N.I.R.	Network Interface Reset (N.I.R.) - Allows for DC line power reset of Optical Network Terminal. Press and hold for 3 seconds to reset/reboot ONT or CPE device.	

VISUAL AND AUDIBLE STATUS/ALARM SIGNALS

STATE	VISUAL INDICATOR	AUDIBLE INDICATOR	DESCRIPTION
NORMAL	System Status Indicator "ON"	System Status Indicator "ON"	Operating under normal AC line power load and conditions.
ON Battery	DC Indicator "ON"		AC line power failure or AC cord disconnection. Desktop Pro is being supplied with battery power.
Replace Battery	Battery Indicator "ON"	1/2 second indicator every 15 minutes	Replace faulty or end of life battery
Battery Missing	Battery Indicator "ON"		Operating on AC line power only without available battery backup for outage scenario. When battery is removed from unit, battery indicator will illuminate after 15 seconds.
Low Battery	DC Indicator Flashes	1/2 second audible indicator 4 times per minute	Battery has reached equal to or less than 45% remaining capacity on battery discharge

CONNECTION POINTS FOR VAC (INPUT) AND VDC/TELEMETRY (OUTPUT)

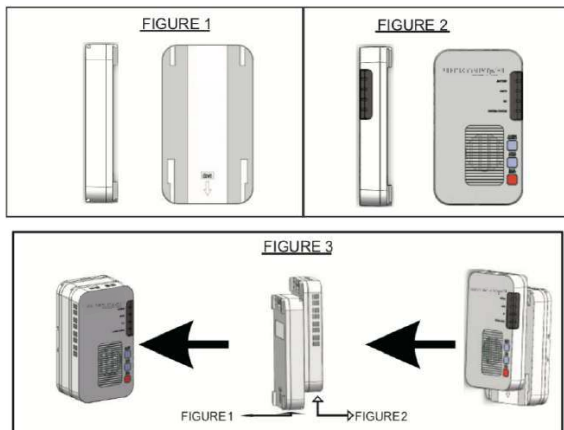


AC INPUT - POWER CORD CONNECTION

DC OUTPUT/TELEMETRY CONNECTION

MODEL: PP36L-12U		
AUDIBLE ALM	VISUAL ALM	TELEMETRY ALM
YES	YES	YES

INSTALLATION



PROCEDURE:

A. Slide MICRO UPS Battery Pack (FIGURE 1) onto MICRO UPS Power Supply (FIGURE 2) until MICRO UPS Battery Pack becomes fully flush with the top of the MICRO UPS Power Supply. You should hear a "click" when the MICRO UPS Battery Pack is fully seated.

B. Connect provided AC Power Cord to AC Input Connector on bottom of the MICRO UPS Power Supply.

C. Connect 3 Prong AC Power Cord Plug End into standard 3 Prong AC Receptacle rated for NEMA 5-15 3 Prong AC Plug.

D. Verify "System Status" LED is "On" with Green illumination.

E. Connect NXG-Vision to ONT (Optical Network Terminal) or other 12Vdc CPE Device.

F. Ensure "System Status" LED is the only illuminated LED on the MICRO UPS. If any additional LEDs are illuminated recheck the MICRO UPS Battery Pack to make sure it is fully seated and ensure that all wiring from the MICRO UPS to ONT is installed correctly as listed by ONT specific instructions.

BATTERY REPLACEMENT

As long as AC line power is available, the MICRO UPS can resume operation while the battery pack is replaced

Procedure: Remove the MICRO UPS Battery Pack by sliding off in opposite direction of installation (FIGURE 3) and follow "Installation Step A." above for installing new MICRO UPS Battery Pack.

NOTE: Please follow all State, Federal, and International Regulations when disposing or recycling Li Ion Battery Pack.

WARNINGS - Li Ion Battery Pack	
	DO NOT DISASSEMBLE BATTERY PACK
	DO NOT DISPOSE OF IN FIRE
	CHARGE ONLY WITH SPECIFIED CHARGER
	DO NOT STORE IN TEMPERATURE OVER 65C

FCC NOTICE

This equipment has been tested and found to comply with the limit for a Class B digital device, pursuant to part 15 of the FCC Rules. These limits are designed to provide protection against harmful interference in a residential installation. This equipment generates, uses and can radiate radio frequency energy and, if not installed and used in accordance with these instructions, may cause harmful interference to radio communications. However, there is no guarantee that interference will not occur in a particular installation. If this equipment does cause harmful interference to radio or television reception, which can be determined by tuning the equipment off and on, the user is encouraged to try to correct the interference by one or more of the following measures: (1) Reorient or relocate the receiving antenna. (2) Increase the separation between the equipment and receiver. (3) Connect the equipment into an outlet on a circuit different from that to which the receiver is connected. (4) Consult the dealer or an experienced radio/TV technician for help

CAUTION: Any changes or modifications could void the authority granted by FCC to operate this equipment

NOTE: Precision Power reserves the right to change or correct the contents of this document and does not assume any responsibility for omissions or errors.

TECHNICAL SPECIFICATION	
INPUT	
Voltage Range	100Vac- 240Vac
Frequency Range	50/ 60Hz
Input Power Cord	NEMA 5- 15/ 3- Prong Power Cord
Input Ground Reference	Earth Grounded
OUTPUT- ON AC	
Output Voltage	12Vdc (Nominal)
Continuous Power Capacity	3A(36WATT)
OUTPUT- ON BATTERY	
Output Voltage	12Vdc (Nominal)
Continuous Power Capacity	3A(36WATT)
BATTERY	
Battery Type	Lithium Ion Battery Pack
Design Life	10- 15Years
Battery Capacity	14. 8V/ 5200mAh
Typical Recharge Time	<12 hrs
Replaceable Pack	Yes
SURGE PROTECTION AND FILTERING	
Lightning/ Surge Protection	Yes(IEC 61000- 4- 5 2005 LEVEL D)
MANAGEMENT	
Battery Auto- Charge	Yes
Remote Battery Alarming	Optional
Local Alarming(Audible/ Visual)	Yes
Alarm Silence	
24 Hour Silence	Yes
Disable Indefinitely	Yes
ONT Reset	Yes
Cold Start	Yes
PHYSICAL	
Maximum Dimensions (L×W×D)	155mm×89mm×31mm
Weight(lb.)	1. 76lb (with battery pack)
ENVIRONMENT	
Operating Temperature	- 10° - 49°(14°- 120. 2°) at full power
Operating Humidity	0- 95% noncondensing within enclosure
Max Operating Elevaion	10. 000ft(3. 000m)
Storage Temperature	- 30°- 65°(- 22°- 149°)

PRECISION POWER
A PRECISION GROUP COMPANY

Authorized Partner
CORE PRECISION POWER
Telecom Systems

Core Telecom Systems
888) 375-8826
sales@coretelecom.net
www.coretelecom.net