

Fiber Distribution Termination Products



A Furukawa Company

1U SHELVES: FIXED & SLIDING

1U S-LIU/F-LIU

One of the best ways to save time and money is to manage your cable resources efficiently. The OFS 1U Series Combination Shelves help you do just that. By using these shelves to terminate and splice fibers, you can rearrange networks quickly and keep track of your fiber resources. Efficient fiber management also helps save on maintenance and replacement costs. The 1U Series Combination Shelves house 24 ST®, 24 SC, or 48 LC terminations. The versatile design can accommodate 24 mechanical splices, 48 single fusion splices, or 18 ribbon (mass fusion) splices using optional splice organizers. The shelves measure 17.0 inches (43.18 cm) wide by 8.0 inches (20.32 cm) deep by 1.72 inches (4.37cm) high. The 1U Series Shelves are available in either a fixed mounted frame configuration (1U F-LIU) or a slide-out version (1U S-LIU). Each shelf features common parts throughout the assembly. The 1U S-LIU utilizes easyglide ball bearing slide rails for smooth pullout and push in with a positive stop feature.

- Preassembled shelves in multiple configurations
- OFS Ganged Adapter Sets maximize footprint
- Includes adapter panels for 48 LC, 24 SC or 24 ST terminations
- 19-inch frame mounting
- Fits 1U rack space (1.72" h x 17" w x 8" d)
- Clear plastic shelf cover protects fibers
- Two 3" Fiber Spools
- One Compression Grommet
- Labels
- Optional extender brackets for 23" frame.



Fixed- 1U F-LIU



Sliding- 1U S-LIU

2U SHELVES: FIXED & SLIDING

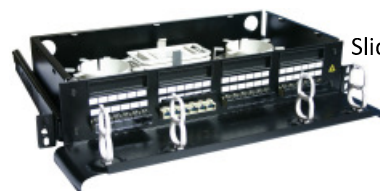
2U S-LIU/F-LIU

The 2U Shelf Unit is an efficient connection management solution to terminate and splice fibers, that enables quicker network rearrangements and easier fiber resources tracking. Its innovative design and configuration also help save on maintenance and replacement costs. The 2U Shelf Unit houses up to 48 ST, 48 SC or 96 LC terminations, and features a versatile design that can accommodate 48 mechanical splices, 96 single fusion splices, or 36 ribbon (mass fusion) splices using optional splice organizers. Its functional dimensions make the shelf unit ideal for 19-inch frame mounting, and optional extender brackets can be added to fit into 23-inch frames. Other features of the 2U Shelf Unit such as a clear plastic shelf cover for protection of the fibers, labels, straightforward front-mounted jumper management, and multiple preassembled configurations, allow users to manage cable resources efficiently.

- Available in both a fixed and sliding configuration
- Pre-assembled shelves in multiple configurations
- Integrated Front Trough
- OFS Ganged Adapter Sets maximize footprint
- Includes adapter panels for 96 LC, 48 SC or 48 ST terminations
- 19-inch frame mounting
- Fits 2U rack space (3.5" h x 17" w x 8" d)
- Clear plastic shelf cover protects fibers
- Four 3" Fiber Spools
- One Compression Grommet
- Labels
- Optional extender brackets for 23" frame.



Fixed- 2U F-LIU



Sliding- 2U S-LIU

CORE Telecom Systems is an Authorized VAR of OFS

Fiber Distribution Termination Products



LIU WALL MOUNT TERMINATION KITS

Lightguide Interconnect Units (LIU's) are modular enclosures providing cross connect and/or interconnect, splicing and terminating capabilities for outside plant and building cables. Although primarily designed as wall mounted units, they can be placed on a rack using a mounting bracket. Capacity is easily increased by installing and interconnecting multiple units. The 100 LIU can terminate 12 fibers with ST or SC connectors, or 24 fibers with LC connectors. With an optional splicing kit it can accommodate up to 12 mechanical or fusion splices. Made of an engineered polycarbonate material, the 100 can accommodate two adapter panels (ordered separately). The 200 LIU can terminate 24 fibers using ST or SC connectors, or 48 fibers using LC connectors. It can accommodate up to 12 mechanical or fusion splices, using an optional splicing kit. The 200 can accommodate up to 24 mechanical or fusion splices with optional splicing kits, but the fiber termination capacity is decreased to 12 ST or SC connections, or 24 LC connections. The 200 LIU is made of aluminum, and can accommodate four adapter panels (ordered separately).

- 100A LIU up to 24 LC, 12 SC or 12 ST
- 200A LIU up to 48 LC, 24 SC or 24 ST
- Wall or frame mountable
- Top & bottom cable entry for easy access
- Two windows for snap-in connector coupling panels
- Slack storage, Lockable
- Fiber routing or expressing capability
- Dimensions: 8.75" high x 7.5" wide x 3" deep (200LS LIU is 4" deep)



100A LIU



200A LIU

LST HIGH DENSITY TERMINATION SHELF

The LST High Density Termination Shelf features a fully modular design, increased protection and security, front and rear accessibility, and versatility as a stand-alone unit. The LST Shelf is used to terminate and interconnect fiber cables. Typically, the LST Shelf is used for termination of buffered fiber optic building cables or direct termination of outside plant fibers. The LST is a 4U (7-inch high) shelf designed for high fiber density locations, including equipment rooms and telecom rooms requiring termination of large numbers of fibers. The shelf can terminate up to 144 LC connections, 72 SC connections, or 72 ST connections. The LST termination shelf comes equipped either with color-coded LaserWave ganged adapters for convenient ordering or empty for mixed configurations. In the empty configuration, gang style adapters are available in LC, ST, and SC.

- Ultra-high density unit handles 144 LC, 72 SC or 72 ST terminations
- 19-inch frame mounting designed for enterprise applications
- Integral top cover and front panel door for protection and neat installation
- Color-coded adapter panels for easy identification
- Fits 4U rack space (7" high x 17" wide x 11" deep)

